

A strong
new partnership...



EFFINGHAM SCHOOLS TRUST

The Vision

In 2019, neighbouring and complementary schools St Teresa's and Cranmore came together to form Effingham Schools Trust (EST), based on a diamond model – a powerful and exciting educational proposition, delivering all the advantages of both single sex and co-education to girls and boys. The partnership has proven incredibly successful, providing new opportunities for pupils of all ages, and bringing strength and stability to both schools.

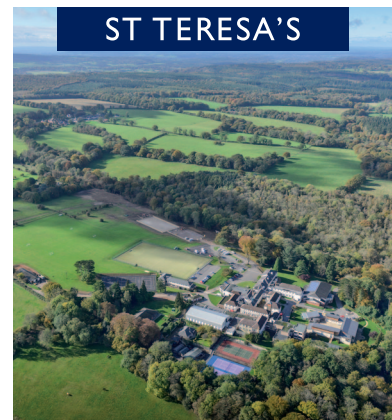
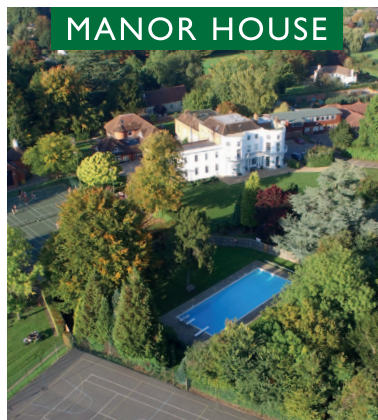
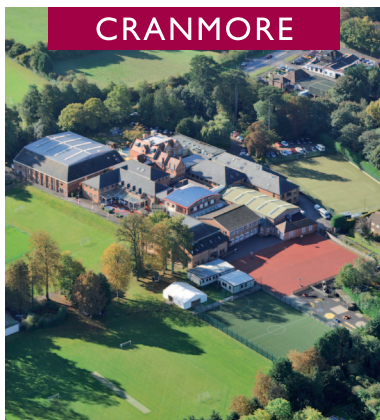
EST is delighted to be able to build on this success with the announcement that Manor House School will be joining the Trust from September 2023, forming a dynamic educational triumvirate. Three modern, progressive schools, Cranmore, Manor House and St Teresa's each have enviable track records, delivering best practice teaching to their pupils, whilst maintaining exceptional pastoral care.

The new partnership will allow each school to focus on its strengths whilst retaining its individuality, presenting to all pupils an extraordinarily rich variety of shared events, facilities and resources to provide a distinctive and distinguished education for pupils of all faiths and backgrounds.

EST's diamond model will offer the benefits of the co-ed classroom to very young pupils, the benefits of the single sex classroom in later prep and secondary years, before finally returning to co-education at Sixth Form. This method reflects and acknowledges that girls and boys approach their learning in differing ways at different developmental stages.

An excellent location – three superb sites

The three schools are conveniently located just a few miles apart, each with its own stunning site in the heart of Surrey. EST's excellent transport services will be further developed to fully accommodate the needs of parents and pupils at Manor House School.



Cranmore



Cranmore has undergone an exciting new phase of development to become an outstanding Prep and Senior school. With a bold, vibrant culture and an enviable sporting and academic reputation, Cranmore offers education up to Year 11. The boys will then continue their academic journey with a guaranteed place in the new co-ed Sixth Form based at St Teresa's from 2025.

The significant investment at Cranmore has resulted in a newly completed Science and Technology Centre. The centre boasts state-of-the-art spaces and resources for science, computing, and design and technology enhancing the academic provision at the school. The new partnership with Manor House will strengthen the position of all three schools, by empowering each to focus on specific teaching and learning environments for pupils.

We are confident that the evolution of EST will present new opportunities for our current pupils to continue to achieve academically and develop personally. We trust that parents will welcome this innovation of the Trust and share our excitement about the bright future at Cranmore.

What will this mean at Cranmore?

- Boys currently at Cranmore will continue their journey at the school until Y11, followed by Sixth Form. There will be a guaranteed place in the Sixth Form for every EST pupil.
- 2024: Pre-Nursery provision will move to Manor House, followed by Nursery in 2025.
- 2026: Reception will move to Manor House.
- 2027: Y1 will move to Manor House.
- 2028: Cranmore will become boys-only, offering education from Y3 to Y11.

Manor House



Manor House is a delightful school in an enviable 17-acre site in a beautiful setting, which proudly celebrated its centenary in 2020 under the direction of Headteacher Tracey Fantham. With almost 300 pupils, the school comprises a Toddler Group for the very youngest children (from age 1), followed by Nursery (age 2–3), Kindergarten (age 3–4) and Lower Prep (Reception to Y2), all co-ed. It is 'girls-only' in Upper Prep School from Y3 to Y6, and Senior School in Years 7 to 11.

Manor House will retain its own ethos and traditions, and the changes will help to ensure that the school continues to have good pupil numbers in the pre-prep, with the assurance of buoyant class sizes in Prep and Senior years. This stability is crucial to the efficient running of the school, and helps to keep independent education as enjoyable, effective and affordable as possible.

The new partnership will help Manor House to consolidate its position as an outstanding girls' school, but with the benefit of exceptional, shared facilities offered by the partner schools, and the guarantee of a place at Sixth Form. Parents will enjoy the new social and community opportunities which membership of the Trust offers, whether sporting, educational or leisure-related.

What will this mean at Manor House?

- Pupils currently at Manor House will continue their journey at the school until Y11, followed by the co-ed Sixth Form at St Teresa's.
- From 2024 Manor House will begin to take girls from Cranmore who would previously have joined St Teresa's Prep.
- From 2025 Nursery provision will be fully established.
- From 2027 girls may choose from Senior School at Manor House or St Teresa's.
- From 2028 Manor House will have a fully co-ed Nursery and Lower Prep.
- There will be a guaranteed place in the Sixth Form for every EST pupil.

St Teresa's



St Teresa's is an incredibly popular school for girls aged 7 to 18, with boarding available from Year 7. The school enjoys a wonderful, secluded site of approximately 55 acres in an 'Area of Outstanding Natural Beauty'.

St Teresa's has enjoyed significant investment and development over the past decade, resulting in a school which enjoys outstanding sporting, social and educational facilities, and which is always oversubscribed.

From 2028, all Prep girls will be located at Manor House, allowing St Teresa's to reassign its own teaching spaces to create the best possible environment for its Senior pupils and Sixth Form students. St Teresa's will be solely a Senior School, with the Sixth Form becoming co-ed from 2025, thus completing EST's vision of education for boys and girls from pre-Nursery through to Sixth Form.

What will this mean at St Teresa's?

- From 2023 every pupil currently at St Teresa's may continue to Y13.
- From 2024 Y3 will no longer be offered at St Teresa's.
- From 2025 Y3 and Y4 will no longer be offered at St Teresa's.
- From 2025, some reassignment of classrooms will begin.
- 2025: Sixth Form becomes co-ed, with a guaranteed place for every EST pupil.
- From 2026 Y3–Y5 will no longer be offered at St Teresa's.
- From 2027 St Teresa's will be Y7–Y11 girls only, with a co-ed Sixth Form.

Early Years, Nursery and Lower Prep

The youngest pupils at Manor House enjoy an enchanting environment with large, bright and airy classrooms, a wonderfully rich outdoor activity area, and access to a Forest School to experience outdoor life 'hands-on'.

EST's proposed investment will allow Manor House to expand this exceptional department to accommodate an increased number of pupils, following the changes at Cranmore and St Teresa's.



Cranmore

Following the expansion and investment which Cranmore has enjoyed since the formation of EST, attention will now turn to reassignment of space.

The Nursery and Lower Prep will be sited exclusively at Manor House from 2028. This will allow expansion of the Upper Prep and Senior Schools, accommodating the continued upsurge in pupil numbers at our excellent School.

Cranmore's characterful Nursery building and associated outdoor space will be remodelled to suit older pupils



Cranmore's stunning new Science & Technology Centre



St Teresa's

St Teresa's enjoys a variety of buildings from classical Georgian architecture through to the most up-to-date, purpose-built structures. By carefully managing the transition to Senior and Sixth Form, the school will be able to make the most effective use of space and buildings – repurposing and developing as necessary – and continue to provide a truly outstanding education.

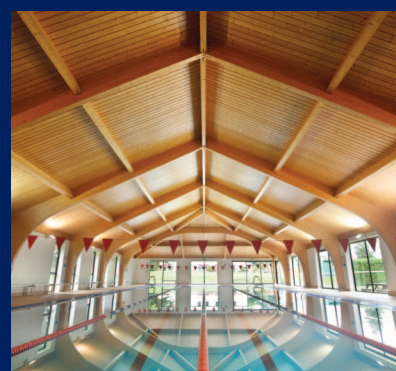


St Teresa's Prep classrooms due for completion in 2025/6 will be repurposed for Senior use in 2027

TG Escapes Modular Eco-Classrooms



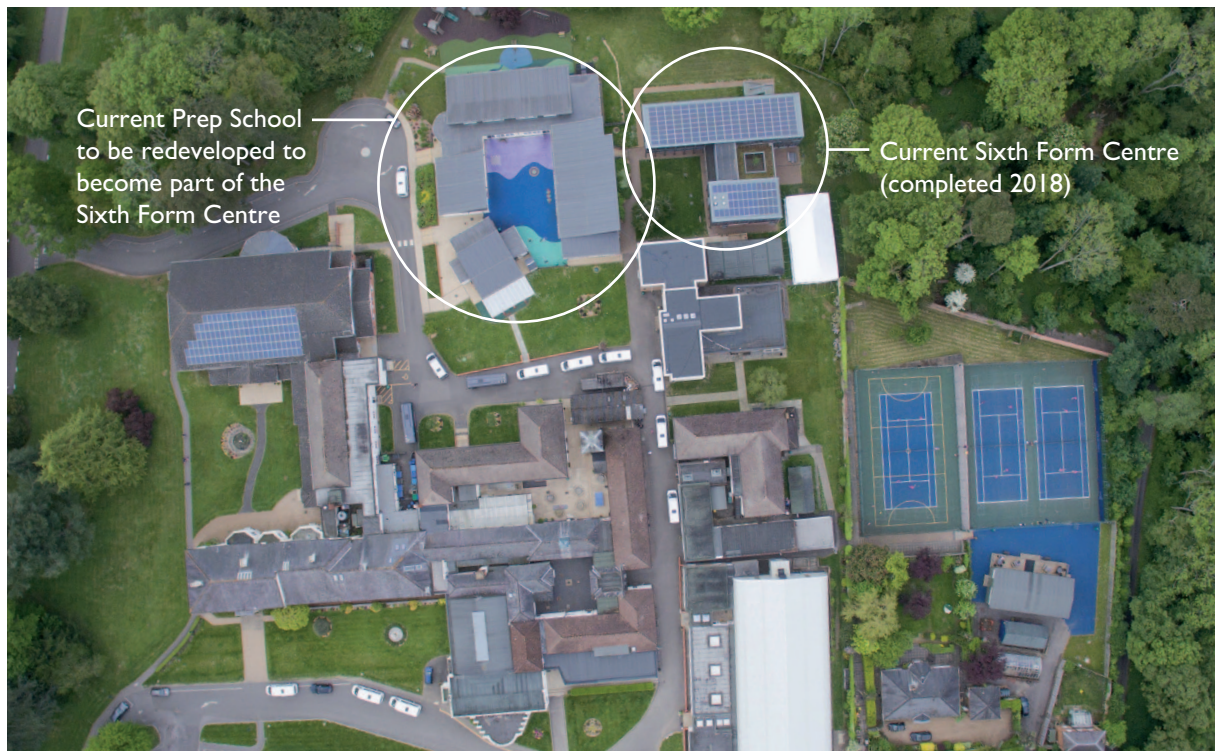
Pupils at Manor House will revel in their new access to the exciting facilities at St Teresa's, including the extremely popular Equestrian Centre, Tennis Academy and 25m indoor pool.



Sixth Form

St Teresa's Sixth Form is going from strength to strength, and has been the beneficiary of substantial investment in the past 5 years. A stunning new Sixth Form Centre with lecture theatre and study rooms provides students with a relaxed yet purposeful environment within which they thrive.

The relocation of the girls' Prep department to Manor House will allow St Teresa's to remodel the vacated rooms to accommodate our growing Sixth Form, and to rise to the challenges that co-education will inevitably pose.



When redeveloped appropriately, the existing Prep School buildings will become part of the Sixth Form complex, conveniently located to the north of the campus.



The outstanding new Sixth Form Centre, which sits adjacent to the current Prep buildings.

The Management Structure

The Effingham Schools Trust will continue to be chaired jointly by Annette Turner and Mike Henderson. Manor House will retain its Board and the Chair, Geraldine Sims-Brassett, will also join the EST board. There will be a team approach going forward with at least two EST governors joining the Manor House board and vice versa. All three schools will work together in genuine partnership.



Mike Farmer Executive Director of the Trust

Mike joined St Teresa's in September 2012. He began his career teaching Economics and Business at the Godolphin School in Salisbury, taking up the position of Assistant Head at Headington School in Oxford in 1997.

In 2003 he was appointed Principal of Kilgraston School in Perthshire. He transformed the school to achieve the highest growth rate within the sector and also topped the Scottish academic league tables. In 2011, Kilgraston gained national recognition by being named the UK Independent School of the Year. Under Mike's headship, St Teresa's

experienced dramatic growth of 60%, enabling capital investment of over £5m.

In addition to Headship, Mike was a member of the governing council for the Girls' Schools Association for many years, and in 2016 he had the honour of chairing the Boarding Schools' Association. He has been a Governor of four independent schools and also chairs the advisory board for the Chinese owned company, Achieve Education. Mike was appointed as the Executive Director of the newly formed Effingham Schools Trust in 2019. He is supported by his wife Mary-Ann who has worked in boarding for many years. They have two grown up children.



Claire Minikin Director of Finance

Claire joined Cranmore in 2011 and is now the Director of Finance of the Effingham Schools Trust. She graduated from the

University of Nottingham with a degree in Theology and went on to qualify as a Chartered Accountant, working at Coopers and Lybrand and subsequently in industry.

Following a career break to look after her young children she returned to work as an accountant at Cranmore, before becoming the Bursar in 2018. Since the Effingham Schools Trust was created in September 2019 she has consolidated and developed the financial infrastructure and been a member of the Trust's Senior Leadership Team.

Claire lives locally with her husband. They have four children, and both sons attended Cranmore.



Andy Ellison Director of Operations

Andy joined Manor House as its Bursar and Clerk to the Governors in 2019 following a successful appointment as the Director of Schools and

Property for the Haberdasher's Livery Company.

Andy describes himself as a "jack of all trades" and acquired most of his finance, personnel and infrastructure experience during his 25 years of service as an officer in the Royal Air Force. As Director of Schools for the Haberdashers, Andy was involved with more than 19 schools, including co-educational academies in the state sector and single sex independent schools at Elstree and Monmouth.

Andy has been a sportsman throughout his life. His early passion for football turned to rowing, and Andy became Chairman of the RAF Rowing Club. Andy continues to represent the RAF at rowing events and he is a National Rowing Umpire. Andy lives in Marlow with his wife Christine, who is a teacher. Their daughter and son are both at University, and when Andy gets the chance he likes to go hillwalking, watch football or read.



Barry Everitt Headmaster of Cranmore

Barry is a passionate educator with over a decade of experience having joined Cranmore in 2010 following a successful career

in professional sport. Born in Ireland, Barry studied Business before moving to the UK where he studied Science at Brunel University followed by a Master's Degree in Education. Under his headship, Cranmore has seen a significant growth in pupil numbers.

Barry's ethos for an enriched education is founded on fostering intellectual curiosity and striving for excellence. He has cultivated a 'sport for all' approach and has been responsible for developing a broad academic curriculum. Barry presided over Cranmore's recent full inspection, which judged the School to be excellent in all areas of the quality of pupils' academic achievements and personal development, an outcome about which he is immensely proud.

Barry is a governor at a London prep school. He has been an advisor at London Irish and volunteers his time to mentor international players building their careers post sport.



Claire McShane Headmistress of St Teresa's

Claire joined St Teresa's in 2013, becoming Headmistress in 2019. During her time at St Teresa's she has supported

Mike Farmer in helping to achieve his dynamic vision of growth and change, concentrating specifically on the area of academic development. St Teresa's has gone from strength to strength under her leadership, with record examination results, and pupil numbers at an all-time high.

After completing her undergraduate degree in Medieval Literature at University College, Oxford, she undertook an M.Phil in Medieval and Renaissance Literature at Queens' College, Cambridge. She completed her doctorate alongside commencing her teaching career.

Claire sits on several Girls' School Association committees, and is a governor of two local schools.

Claire has a passion for the education and mentoring of young women in particular, firmly believing that happy, nurtured, rounded girls will traverse the vicissitudes of life with determination and dash.



Tracey Fantham Headteacher of Manor House

Tracey has gained extensive and successful school leadership experience and believes in creating an ethos in which children and staff are

happy and willing to embrace challenges in order to excel.

Tracey received a BA (Hons) in Sports Science, a PGCE from Loughborough University and an MA in Education Management. After teaching PE and Psychology in two schools, she joined the leadership team at a local state school, became a Deputy Head and subsequently Head at a large school in Epsom. In 2016 Tracey became the Head at Manor House where she has created a positive and nurturing ethos, a strong academic profile and a broad enrichment programme. Tracey is passionate about teaching and learning strategies, and has championed digital innovation.

Tracey has been a school governor for many years and is now a governor at St John's School, Leatherhead. Tracey is on the GSA Sport and Wellness committee and promotes both participation and excellence. Tracey is a GB age group triathlete and competes internationally and locally.



Sarah Conrad Headteacher of St Teresa's Prep/ Director of Prep Education

Sarah Conrad (BA Hons Dunelm, PGCE, NPQH)

graduated with a degree in English, German and Theology from the University of Durham. After completing her PGCE, she began her career in primary education, teaching in a variety of schools including a four-year post in the renowned British International School, Tanglin Trust School, in Singapore.

On her return to the UK, Sarah worked as Director of Music at St Cedd's Independent School before moving to New Hall – one of the largest Catholic independent schools in the country – where she worked for 3 years as Deputy Head and Director of Music, and 7 years as Headteacher of the Prep School. Sarah was appointed Head of St Teresa's Prep School in September 2015.

As an experienced ISI inspector, and with 15 years of successful Headship, Sarah will take on additional responsibility as Director of Prep Education. She will support and advise the EST Prep Schools to ensure that excellent standards are maintained at all times.

Summary



CRANMORE

Senior School (boys)
Upper Prep (boys)

650 pupils

MANOR HOUSE

Senior School (girls)
Upper Prep (girls)
Lower Prep (co-ed)
Nursery (co-ed)
400 pupils

ST TERESA'S

Sixth Form (co-ed)
Senior School (girls)

700 pupils

- The diamond model will provide a unique opportunity for pupils and their families by offering an exceptional and distinctive education.
- The Trust firmly believes that the partnership between the three schools will provide job security, stability and multiple opportunities for the highly talented staff in all three schools.
- The Trust will enjoy the outstanding facilities of Cranmore, Manor House and St Teresa's. The combined acreage over the three schools is approximately 100 acres.
- The changes brought about by the partnership will be very gradual.
- The Trust will be financially secure with assets in excess of £30m and turnover in excess of £25m.

FOR FURTHER INFORMATION:

CRANMORE

www.cranmore.org



www.manorhouseschool.org

ST TERESA'S

www.st-teresas.com